

Наконечники для индикаторов и измерительных головок



с наружной резьбой М 2.5

<p>M2.5-6g 6 5 ø1/8" ø4.7</p> <p>M2/70</p>	<p>M2.5-6g 6 5 ø4.8</p> <p>573/10</p>	<p>M2.5-6g 5 2 ø</p> <p>ø = 8, 10, 11, 12, 13, 14, 15, 16, 17, 18, 19, 20, 25, 30, 35</p> <p>573/11</p>	<p>M2.5-6g 5 2 ø10 R15</p> <p>573/12</p>	<p>45° M2.5-6g 5 10 ø4.5</p> <p>573/13</p>	<p>M2.5-6g 60° 5 10 ø4.5</p> <p>573/13-60</p>
<p>ø4.7 M2.5-6g 16 5 11 ø1.5</p> <p>573/14</p>	<p>ø4.7 M2.5-6g 5 5 L ø1.5</p> <p>L = 15, 20, 25, 30, 35, 40, 50mm</p> <p>573/14 L</p>	<p>ø4.7 M2.5-6g 5 10 16 ø3.5 R0.5</p> <p>573/15</p>	<p>ø4.7 M2.5-6g 5 15° R0.5</p> <p>L = 5, 10, 15, 20, 30mm</p> <p>573/15 L</p>	<p>ø4.7 M2.5-6g 5 10 16 ø4.5 ø1/8"</p> <p>573/16</p>	<p>ø4.7 M2.5-6g 5 6 L ø4.5 ø1/8"</p> <p>L = 10, 20, 30, 40, 50, 60, 70, 80, 90 mm</p> <p>573/17 L</p>
<p>ø4 M2.5-6g 12 5 ø1-6.5</p> <p>573/18</p>	<p>M2.5-6g 5 18 ø5 ø7-11</p> <p>573/19</p>	<p>M2.5-6g 20° SW5 7.5 16 0.2 ø5</p> <p>573/20 E</p>	<p>ø4.7 M2.5-6g 10 5 6 ø3/32" ø3</p> <p>573/21</p>	<p>ø4.5 M2.5-6g 5 2 6 ø7.8</p> <p>573/22</p>	<p>M2.5-6g 3 5 ø3/32" ø4.7</p> <p>573/23</p>
<p>M2.5-6g SW5 6 ø2 ø3 ø4.5 7.5 10</p> <p>573/24 E</p>	<p>23 18 M2.5-6g 8 SW5 11.2 7.5 8.7 ø8.4 7</p> <p>573/25 E</p>	<p>6x6 SW5 M2.5-6g 7.5 8</p> <p>с внутренней резьбой М 2.5 с наконечником 573/18 Ø 1-6 мм и внутренней резьбой М 1.6</p> <p>573/27 E</p>	<p>7 SW5 M2.5-6g 10 0.5 7.5 ø7.5</p> <p>573/28 E</p>	<p>5.9 4 1.5 ø7.5 R3.75 0.005A</p> <p>573/28 E</p>	
<p>M2.5-6g 5 3 ø5 L</p> <p>L = 3, 5, 8, 10, 12, 15, 20mm</p> <p>573/29 L</p>	<p>M2.5-6g 5 3 ø5 R4.5 L</p> <p>L = 3, 5, 8, 10, 12, 15, 20mm</p> <p>573/30 L</p>	<p>M2.5-6g 5 4.5 R6 ø10</p> <p>573/32</p>	<p>12 1.2 5 4.5 11 20 ø2 ø7.5 ø8 40° ø0.8</p> <p>573/34</p>	<p>SW5 M2.5-6g 9.4 7.5 1.15 0.5 ø</p> <p>573/39 E</p>	<p>M2.5-6g 5 3 ø4 ø</p> <p>ø = 7, 8 or 10 L = 1, 1.5 or 2 mm</p> <p>573/40-D-L</p>

Удлинитель для наконечников

Наконечники с вставкой из твердого сплава (H) или керамики (C)

Наконечники с шариками из рубина (R), сапфира (S) или пластика (KU)

с наружной резьбой M 2.5

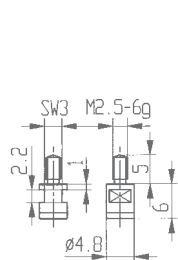
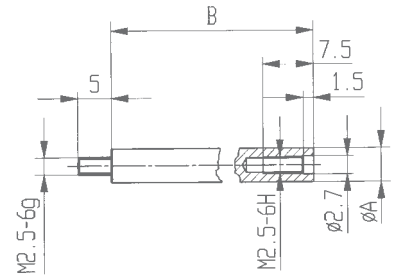
Удлинитель для наконечников

Диаметр A: 4 мм (для индикаторных стержней Ø 4 мм)

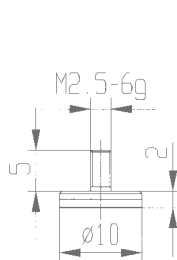
Диаметр A: 5 мм (для индикаторных стержней Ø 5 мм)

Длина B стандартно: 10, 15, ... 90, 95 и 100 мм

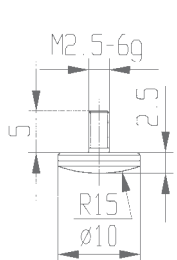
По заказу возможно изготовить с другой длиной



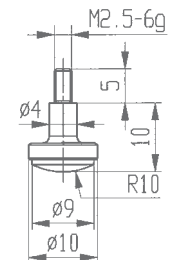
573/10 H



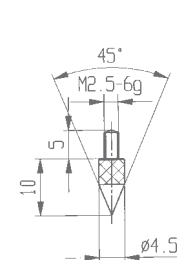
573/11 H/C



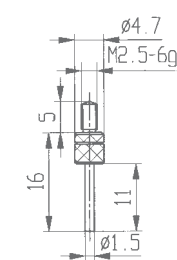
573/12 H/C



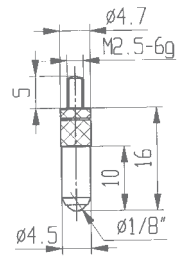
573/12-10 H



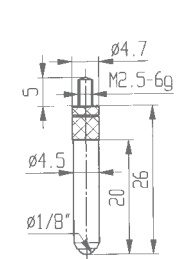
573/13 H



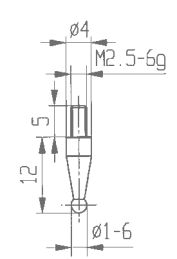
573/14 H



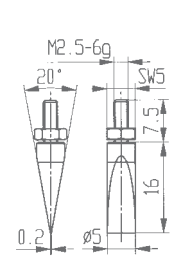
573/16 H/R/S



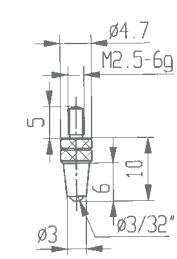
573/17 H/R/S



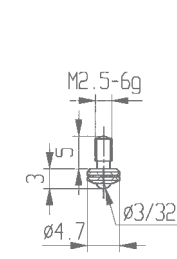
573/18 H



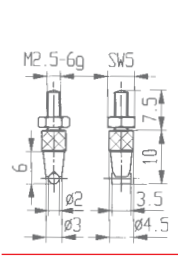
573/20 HE



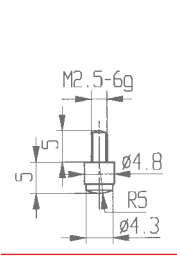
573/21 H



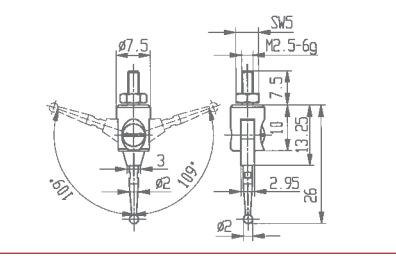
573/23 H



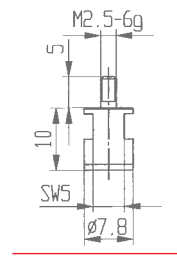
573/24 HE



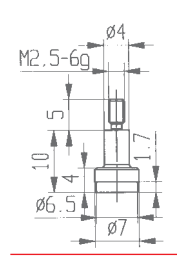
573/31 H



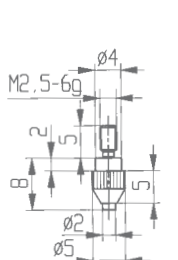
573/33 HE



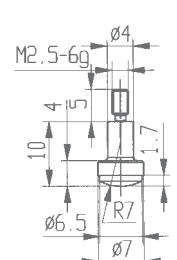
573/35 H



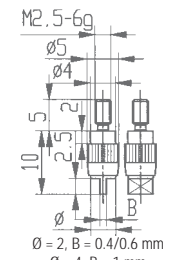
573/102 H



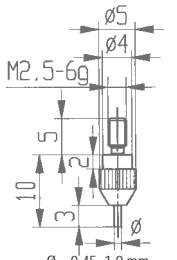
573/105 H



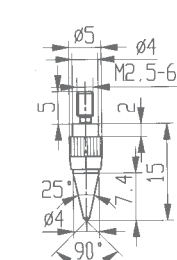
573/108 H



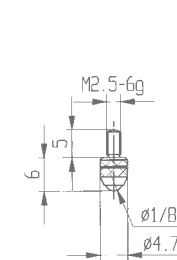
573/110 H



573/112 H



573/114 H



M 2/70 H/R/S/C/KU

Изготовим наконечники по чертежам заказчика